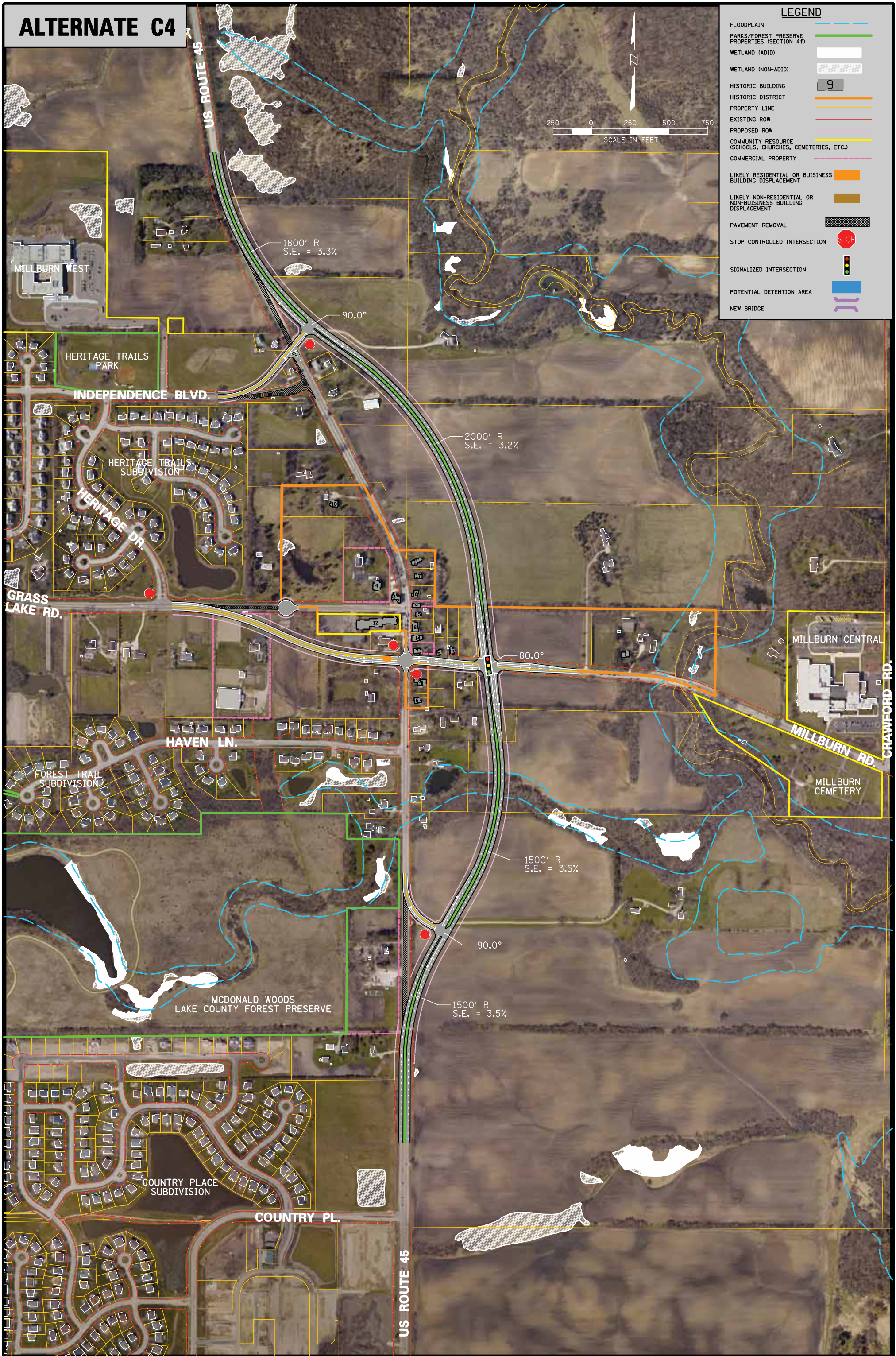
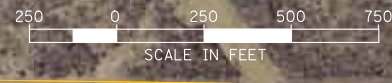


# ALTERNATE C4



## LEGEND

- FLOODPLAIN
- PARKS/FOREST PRESERVE PROPERTIES (SECTION 4F)
- WETLAND (ADID)
- WETLAND (NON-ADID)
- HISTORIC BUILDING
- HISTORIC DISTRICT
- PROPERTY LINE
- EXISTING ROW
- PROPOSED ROW
- COMMUNITY RESOURCE (SCHOOLS, CHURCHES, CEMETERIES, ETC.)
- COMMERCIAL PROPERTY
- LIKELY RESIDENTIAL OR BUSINESS BUILDING DISPLACEMENT
- LIKELY NON-RESIDENTIAL OR NON-BUSINESS BUILDING DISPLACEMENT
- PAVEMENT REMOVAL
- STOP CONTROLLED INTERSECTION
- SIGNALIZED INTERSECTION
- POTENTIAL DETENTION AREA
- NEW BRIDGE



SCALE IN FEET



MILLBURN WEST

HERITAGE TRAILS PARK

INDEPENDENCE BLVD.

HERITAGE TRAILS SUBDIVISION

HERITAGE DR.

GRASS LAKE RD.

HAVEN LN.

FOREST TRAIL SUBDIVISION

MCDONALD WOODS LAKE COUNTY FOREST PRESERVE

COUNTRY PLACE SUBDIVISION

COUNTRY PL.

US ROUTE 45

MILLBURN CENTRAL

MILLBURN RD.

MILLBURN CEMETERY

CRAWFORD RD.

1800' R  
S.E. = 3.3%

90.0°

2000' R  
S.E. = 3.2%

80.0°

1500' R  
S.E. = 3.5%

90.0°

1500' R  
S.E. = 3.5%