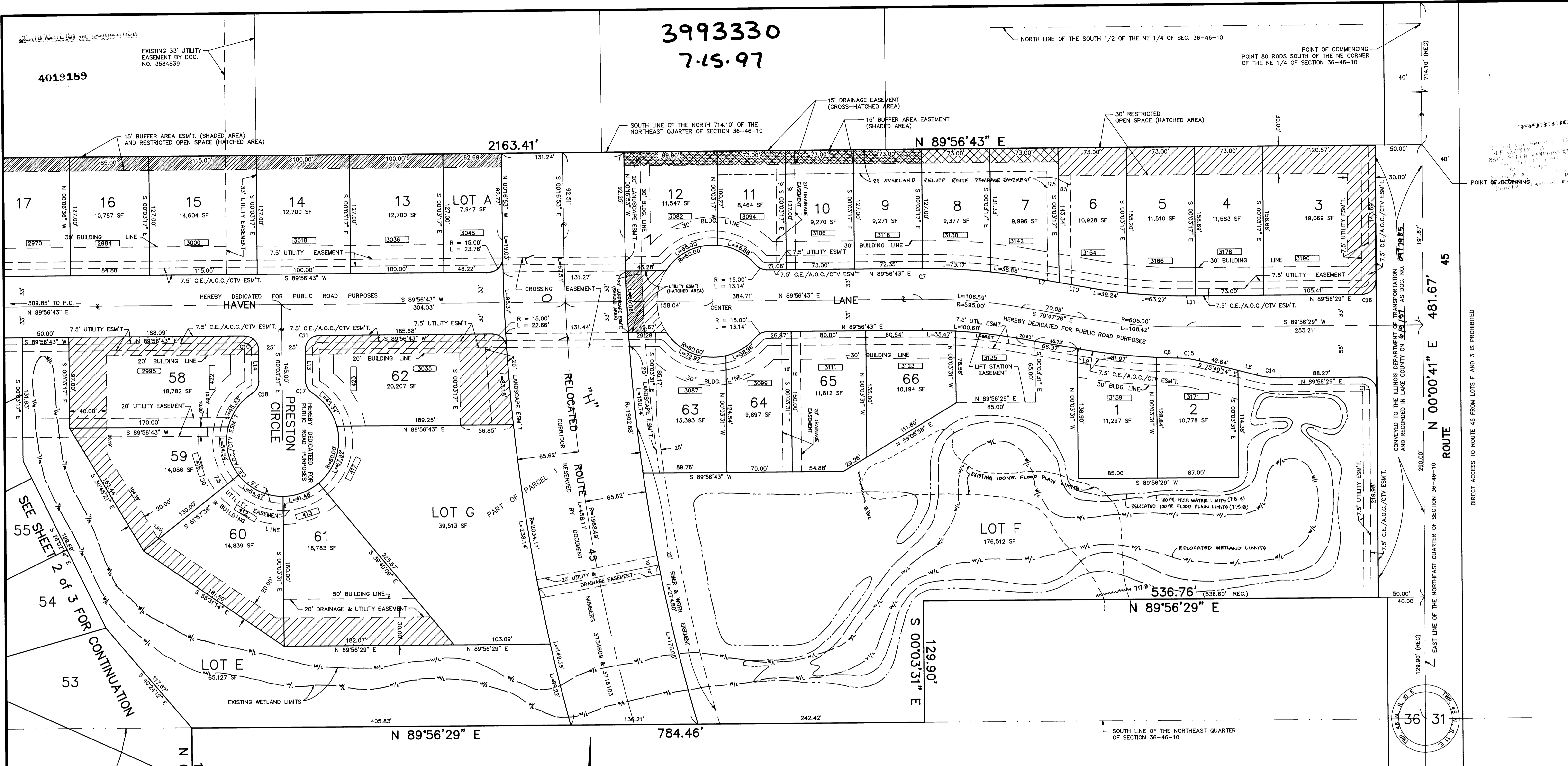
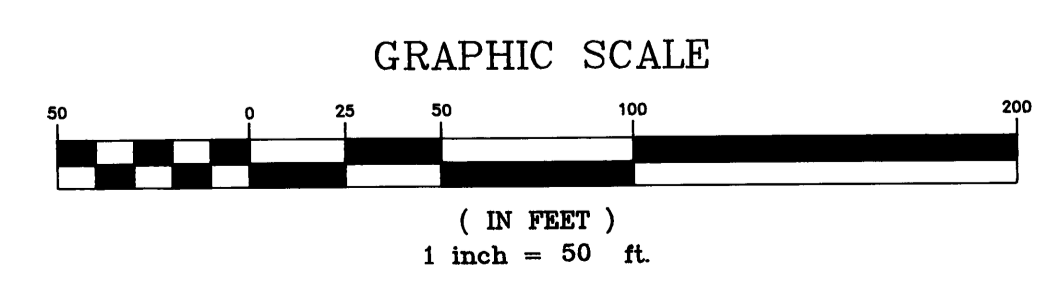


3993330
7.15.97



CURVE	RADIUS	LENGTH
C1	15.00'	24.54'
C2	15.00'	23.35'
C4	15.00'	13.14'
C5	15.00'	13.14'
C6	638.00'	22.42'
C7	628.00'	0.65'
C8	15.00'	23.76'
C9	15.00'	22.66'
C10	15.00'	23.56'
C11	15.00'	19.97'
C12	1902.88'	23.58'
C13	100.00'	25.11'
C14	100.00'	23.55'
C15	100.00'	23.55'
C16	15.00'	23.54'
C17	15.00'	15.12'
C18	15.00'	15.12'
C19	2034.11'	19.03'

LINE	DIRECTION	DISTANCE
L6	S 75°40'14" E	21.01'
L7	N 79°47'26" W	35.31'
L8	S 89°56'43" W	40.75'
L9	N 79°47'26" W	3.69'
L10	N 79°47'26" W	34.74'
L11	N 89°56'29" E	9.85'
L12	N 00°03'17" W	27.56'
L13	N 00°03'31" W	33.55'
L14	N 00°03'31" W	33.56'



FOREST TRAIL SUBDIVISION (P.U.D. 1)

PARCEL ONE: THAT PART OF THE SOUTH HALF OF THE NORTHEAST QUARTER OF SECTION 36, TOWNSHIP 46 NORTH, RANGE 10, EAST OF THE THIRD PRINCIPAL MERIDIAN, DESCRIBED AS FOLLOWS: COMMENCING AT A POINT 80 RODS SOUTH OF THE NORTH EAST CORNER OF SAID NORTHEAST QUARTER; THENCE SOUTH ALONG THE EAST LINE THEREOF, A DISTANCE OF 714.10 FEET FOR A POINT OF BEGINNING; THENCE CONTINUING SOUTH ALONG THE LAST DESCRIBED COURSE, A DISTANCE OF 481.67 FEET; THENCE WEST ALONG A LINE 129.90 FEET NORTH OF AND PARALLEL WITH THE SOUTH LINE OF SAID NORTHEAST QUARTER, A DISTANCE OF 536.60 FEET; THENCE SOUTH PARALLEL WITH SAID EAST LINE OF THE NORTHEAST QUARTER OF SAID SECTION 36; THENCE WEST ALONG THE SOUTH LINE OF SAID NORTHEAST QUARTER TO THE SOUTHWEST CORNER THEREOF; THENCE NORTH ALONG THE WEST LINE OF SAID QUARTER TO THE SOUTH LINE OF THE NORTH 907.50 FEET OF SAID QUARTER SECTION; THENCE EAST ALONG SAID SOUTH LINE, A DISTANCE OF 480.0 FEET; THENCE NORTH PARALLEL WITH THE WEST LINE OF SAID QUARTER SECTION, A DISTANCE OF 193.40 FEET TO THE SOUTH LINE OF THE NORTH 714.10 FEET OF SAID NORTHEAST QUARTER; THENCE EAST ALONG SAID SOUTH LINE TO THE POINT OF BEGINNING, ALL IN LAKE COUNTY, ILLINOIS.

PARCEL TWO: THE NORTH 8 3/8 RODS OF THE WEST HALF OF THE SOUTHWEST QUARTER OF SECTION 36, TOWNSHIP 46 NORTH, RANGE 10, EAST OF THE THIRD PRINCIPAL MERIDIAN, IN LAKE COUNTY, ILLINOIS.



STATE OF ILLINOIS
COUNTY OF LAKE) SS

THIS IS TO CERTIFY THAT I, VINCENT J. MASSE, ILLINOIS REGISTERED LAND SURVEYOR NO. 2854, HAVE SURVEYED AND SUBDIVIDED THE PROPERTY DESCRIBED IN THE ABOVE CAPTION, AS SHOWN BY THE ANNEXED PLAT WHICH IS A CORRECT AND TRUE REPRESENTATION OF SAID SURVEY AND SUBDIVISION. ALL DISTANCES ARE SHOWN IN FEET AND DECIMALS THEREOF. IRON PIPE STAKES AT ALL LOT CORNERS, POINT OF CURVE, POINTS OF TANGENCY AND INTERMEDIATE POINTS OF CURVES AS NOTED ON THE ANNEXED PLAT. ALL DISTANCES SHOWN ON CURVED LINES ARE CHORD DISTANCES, UNLESS OTHERWISE NOTED. I FURTHER CERTIFY THAT THE ABOVE CAPTIONED PROPERTY IS WITHIN THE VILLAGE LIMITS OF THE VILLAGE OF LINDEHURST.

I FURTHER CERTIFY THAT A PORTION OF THE ABOVE CAPTIONED PROPERTY LIES WITHIN A FLOOD HAZARD AREA ACCORDING TO THE FLOOD INSURANCE RATE MAP COMMUNITY PANEL NO. 170357 00858 DATED NOVEMBER 3, 1992 AND IS CONTAINED COMPLETELY WITHIN LOT "F" AND LOTS 1 THRU 66 INCLUSIVE ARE WITHIN ZONE C. GIVEN UNDER MY HAND AND SEAL AT LIBERTYVILLE, ILLINOIS, THIS 19th DAY OF JULY, 1997.

Vincent Masse
VINCENT J. MASSE, ILLINOIS REGISTERED LAND SURVEYOR #2854

DATE	BY	REVISIONS
4-23-97	VJM	ATTORNEY REVISIONS/IDOT
3-7-97	VJM	VILL COMMENTS 3-7-97
2-25-97	VJM	VILL COMMENTS 2-17-97
2-10-97	VJM	VILLAGE COMMENTS 2-6-97
2-6-97	VJM	ADDED WETLANDS & BFE
1-24-97	VJM	LOTS 11,12,63&64 PER P.M.
1-21-97	VJM	LOTS 12 & 63

CHAMBERLIN / MASSE ENGINEERING
LAND SURVEYORS ~ PLANNERS ~ ENGINEERS
438 PETERSON ROAD
LIBERTYVILLE, ILLINOIS 60048
(847) 362-8444 FAX 362-9350

DRAWN BY: J.M. JOB # 920421 DRAWING # 1 of 3
CHECKED BY: V.J.M. F.B. PG.

