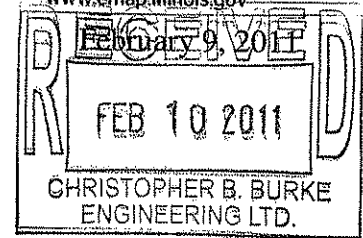


Chicago Metropolitan Agency for Planning

233 South Wacker Drive
Suite 800
Chicago, Illinois 60606

312 454 0400
www.cmap.illinois.gov



Mr. Martin G. Buehler, P.E.
Director of Transportation / County Engineer
Lake County Division of Transportation
600 W. Winchester Road
Libertyville IL 60048

Subject: US 45 from IL 173 to IL 132 – Adjusted 2040 ADTs for Scenarios A4 and C4
Lake County DOT

Dear Mr. Buehler:

In response to a request made on your behalf and dated February 9, 2011 in regards to year 2040 average daily traffic (ADT) projections issued for the above location on November 30, 2010, we have developed adjusted year 2040 average daily traffic (ADT) projections for five (5) segments within the subject location.

The adjusted 2040 projections for those 5 segments are depicted on 2 attached diagrams for the respective A4 and C4 scenarios. The remaining segments on the applicable scenarios shall remain unchanged.

Please be aware that the Illinois Department of Transportation has prepared Strategic Regional Arterial (SRA) reports for: US 45, IL 173, and IL 132. SRA Reports include right-of-way, geometric, access and transit recommendations. The executive summaries can be found at www.cmap.illinois.gov/sra/ with other information about the SRA system.

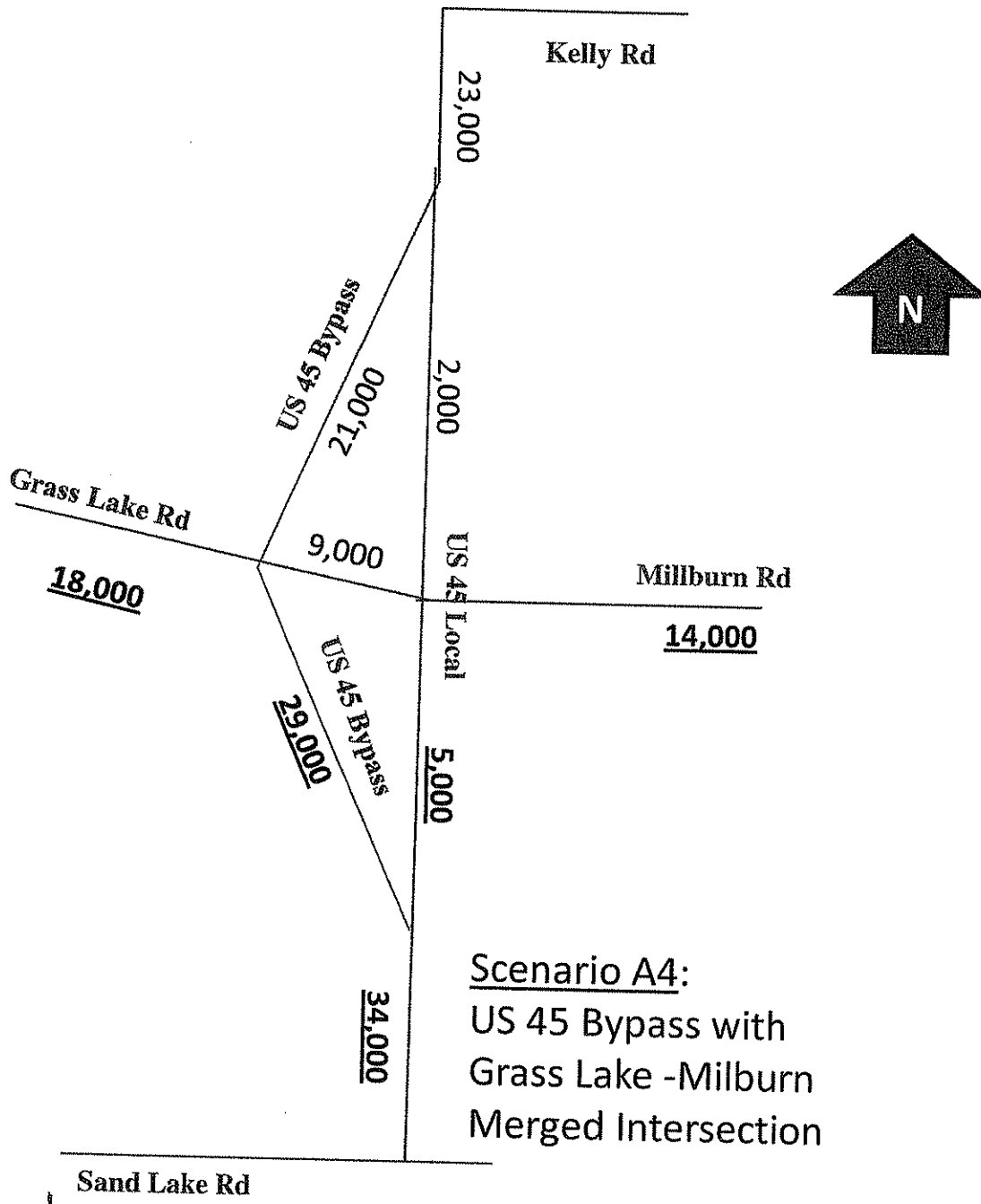
Traffic projections are developed using existing ADT data provided in the request letter and the results from the most recent (October 2010) CMAP RTP/TIP Travel Demand Analysis. The regional travel model uses CMAP 2040 socioeconomic projections and assumes the implementation of the 2040 Regional Transportation Plan for the Northeastern Illinois area.

If you have any questions, please call Jose Rodriguez at (312) 386-8806.

Sincerely,

Donald P. Kopec
Deputy Director for Planning and Programming

cc: Gleason (LCDOT); Matkovic (CBBEL)
M:\proj\ceb\forecasts\2010 Response\la-23-10 adj A4 and C4.docx

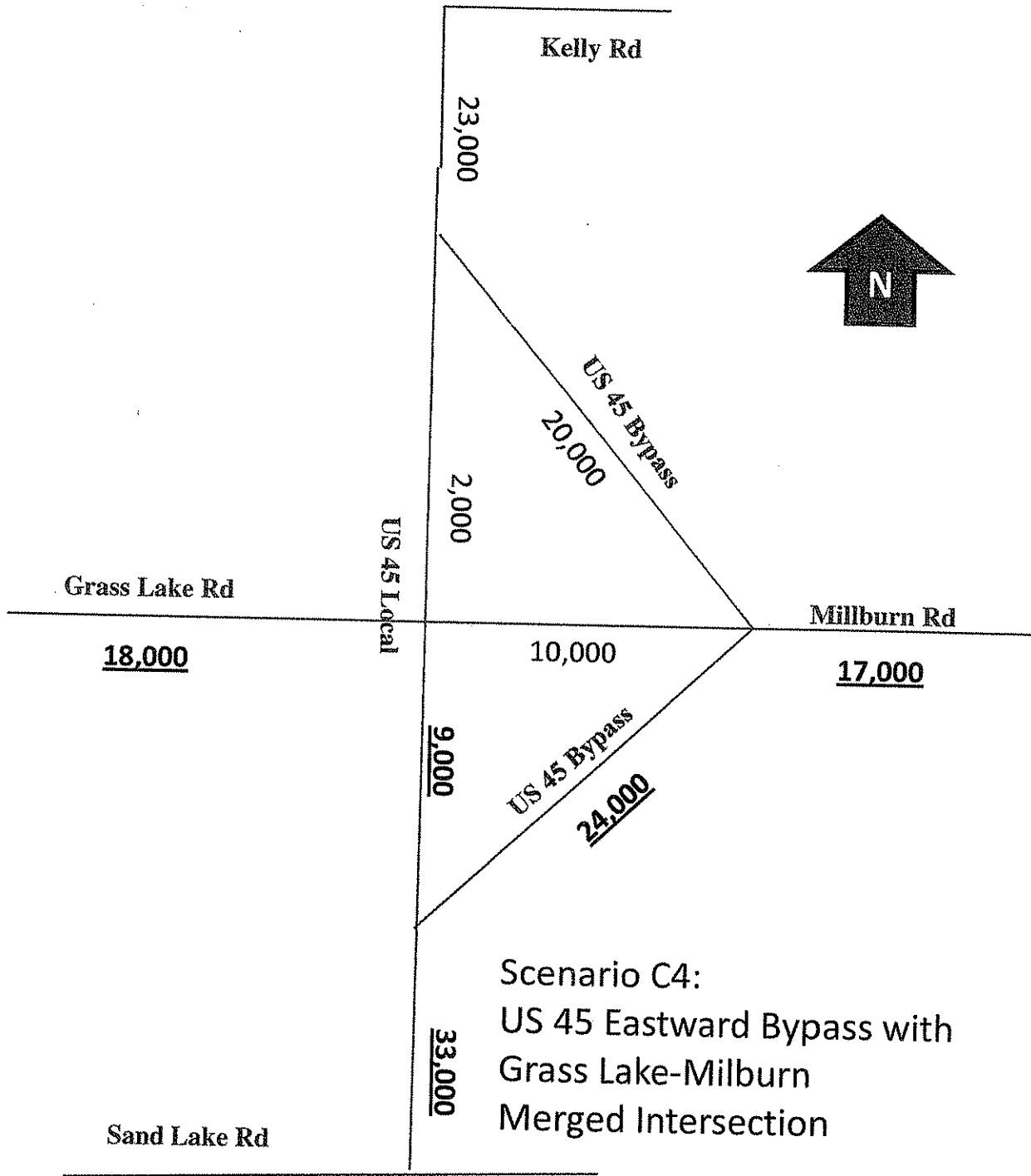


Scenario A4:
 US 45 Bypass with
 Grass Lake -Milburn
 Merged Intersection

2040 ADTs (Dec. 2010)
 Adjusted ADTs – **XX,XXX** (Feb. 2011)

2/9/2011

US 45 from IL 173 to IL 132 - Milburn (la-23-10)
 - 2040 Update with Concurred Adjustments



2040 ADTs (Dec. 2010)
 Adjusted ADTs – XX,XXX (Feb. 2011)